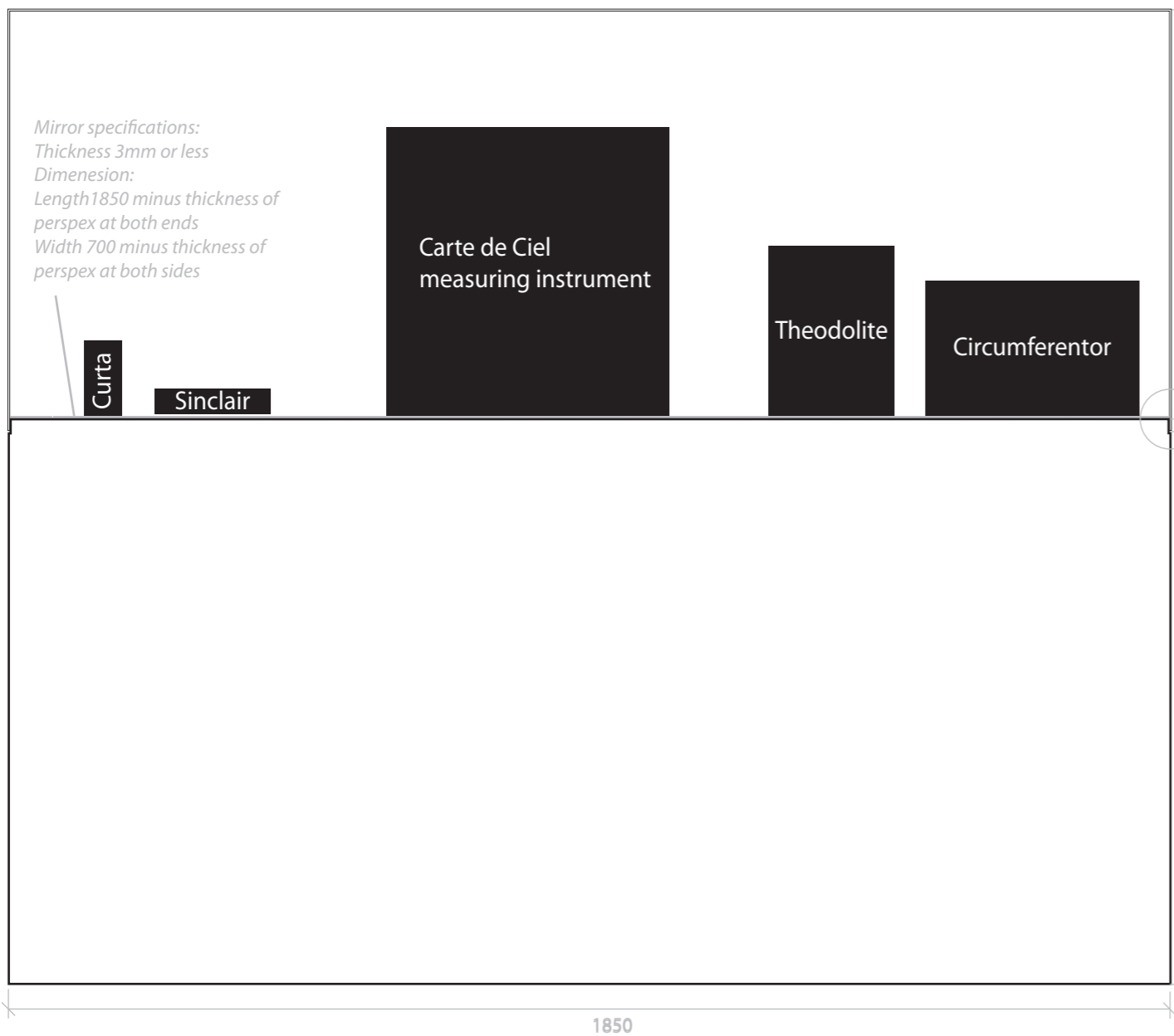


Objects Group 1
Scale 1: 10

Side View

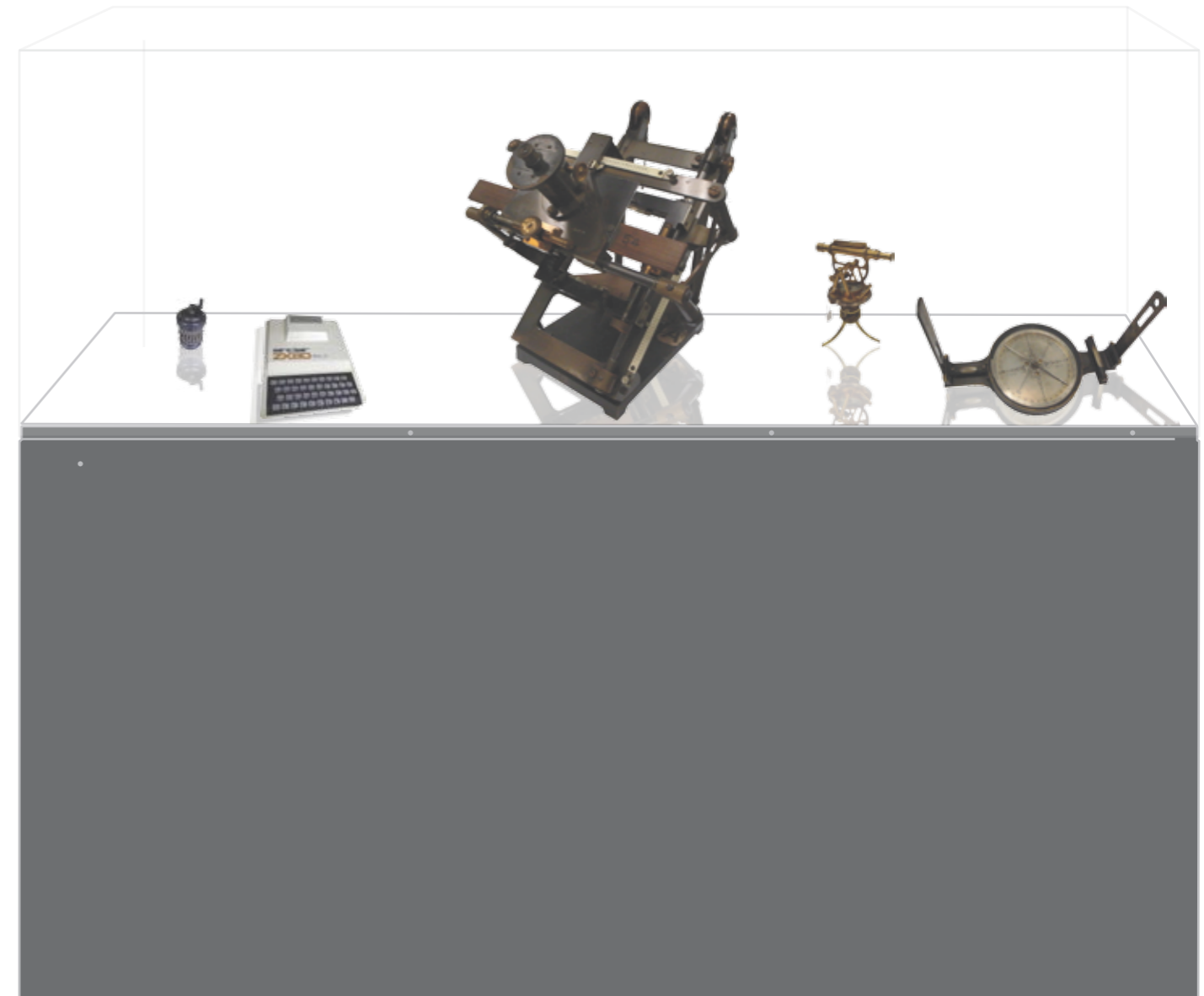


Perspex casing specifications:
3mm thickness (or as advised by PHM)
Dimension:
Height 650 (plus 'overhang' for security screws, shown here as 20mm)
Width 1850
Depth 700

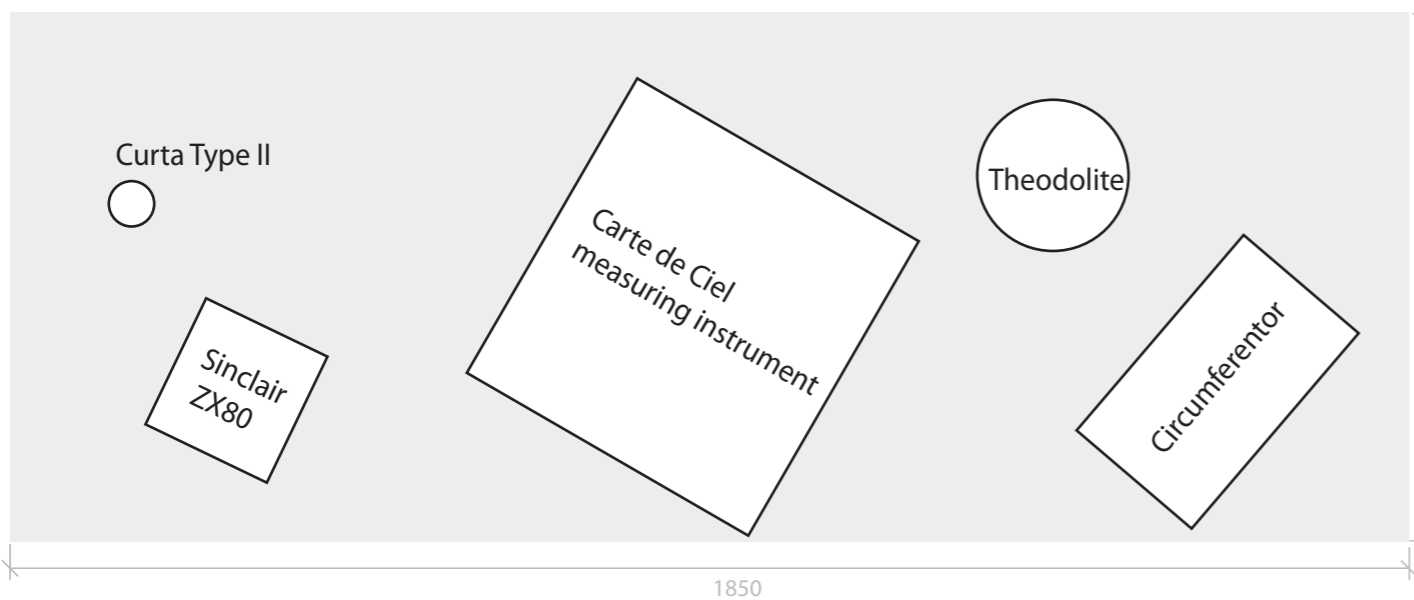
Recess at the top of the plinth on all sides. The dimension shown here is 20mm high and 3mm deep.

No. of security screws around the plinth as appropriate.

Plinth dimension:
Height 900
Length 1850
Depth 700

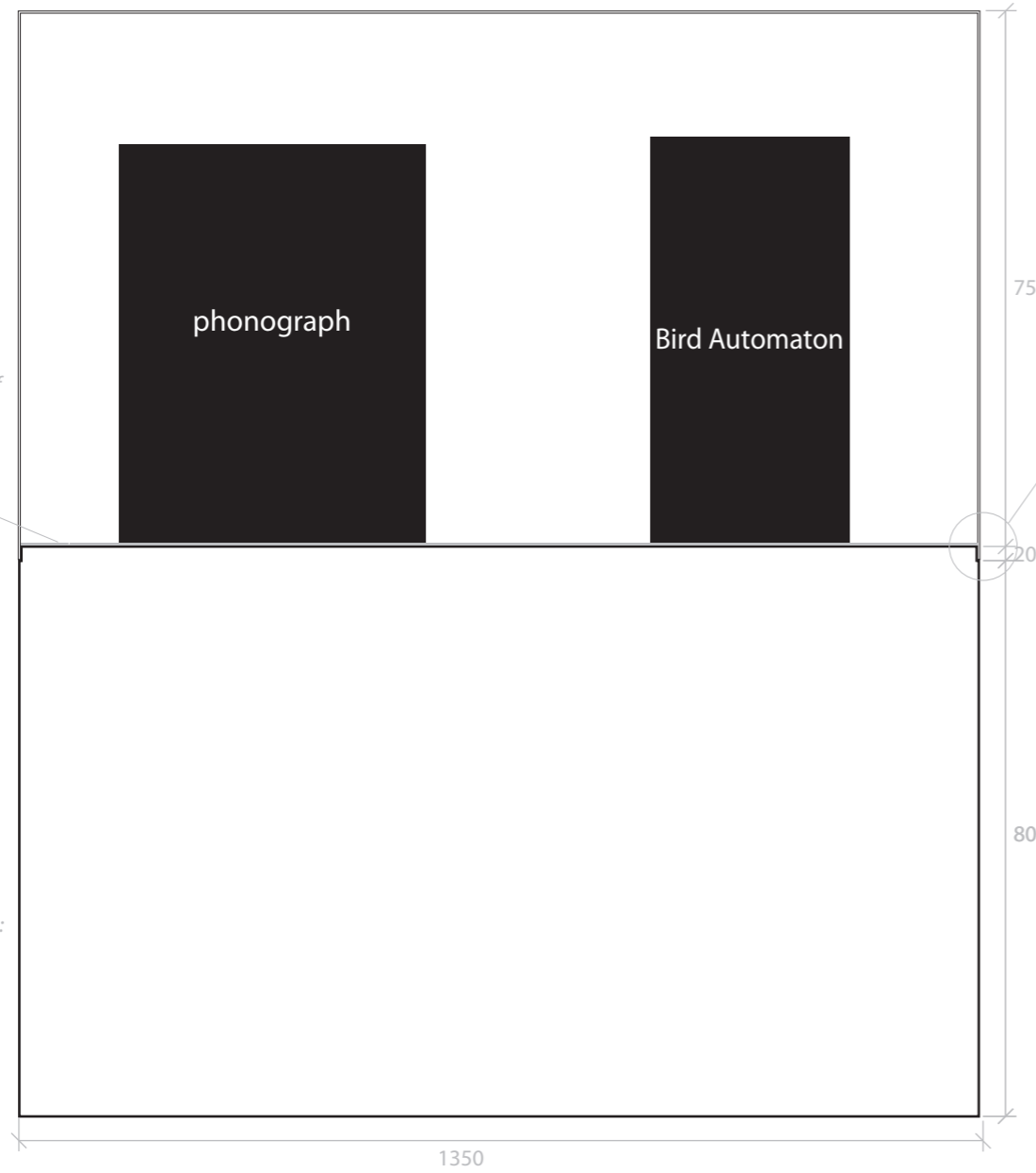


Top view



Objects Group 2
Scale 1: 10

Side View

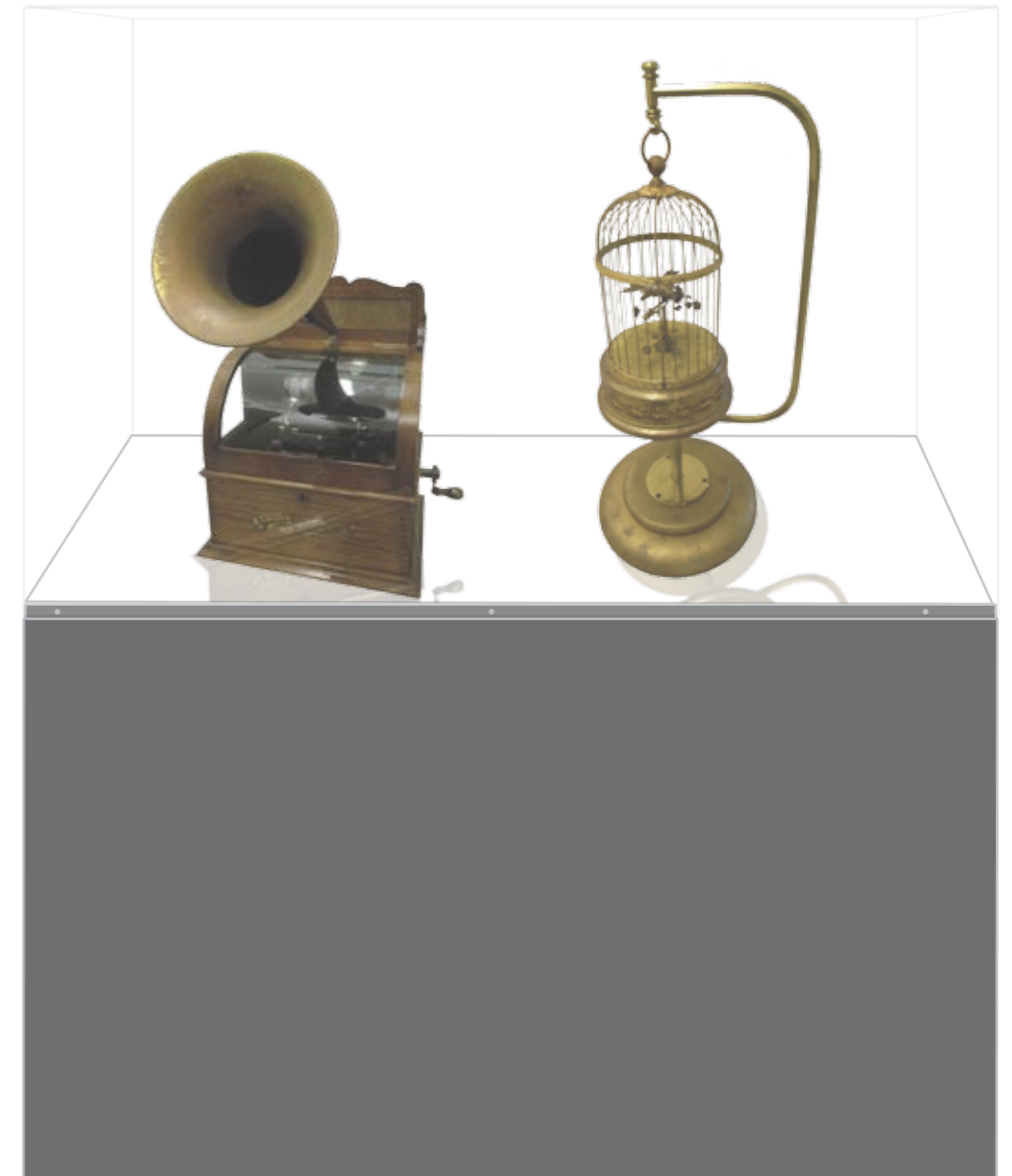
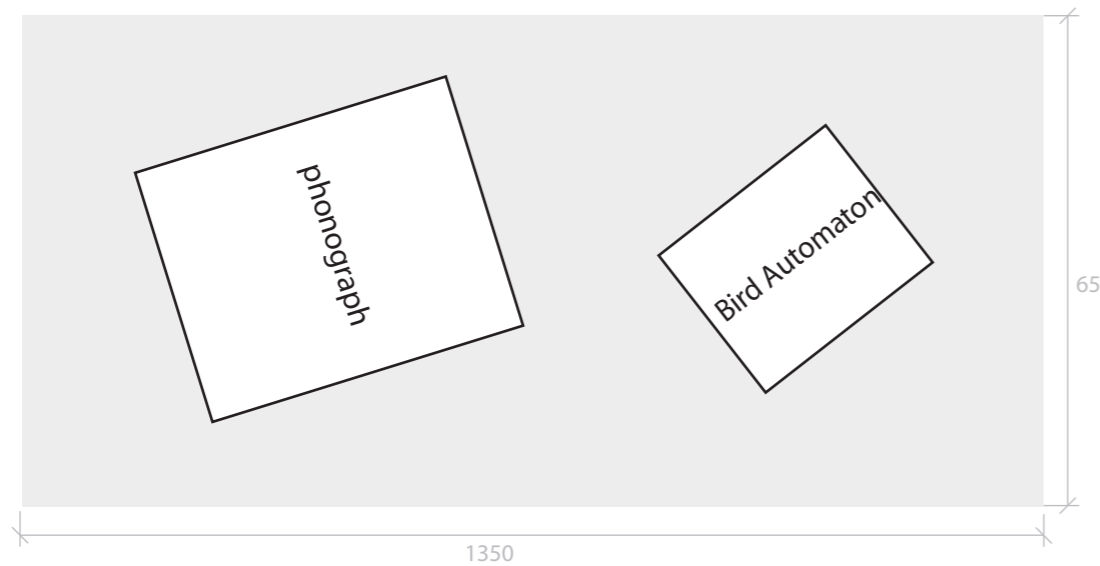


Perspex casing specifications:
3mm thickness (or as advised by PHM)
Dimension:
Height 750 (plus 'overhang' for security screws, shown here as 20mm)
Width 1350
Depth 650

Recess at the top of the plinth on all sides. The dimension shown here is 20mm high and 3mm deep.

Mirror specifications:
Thickness 3mm or less
Dimension:
Length 1350 minus thickness of perspex at both ends
Width 650 minus thickness of perspex at both sides

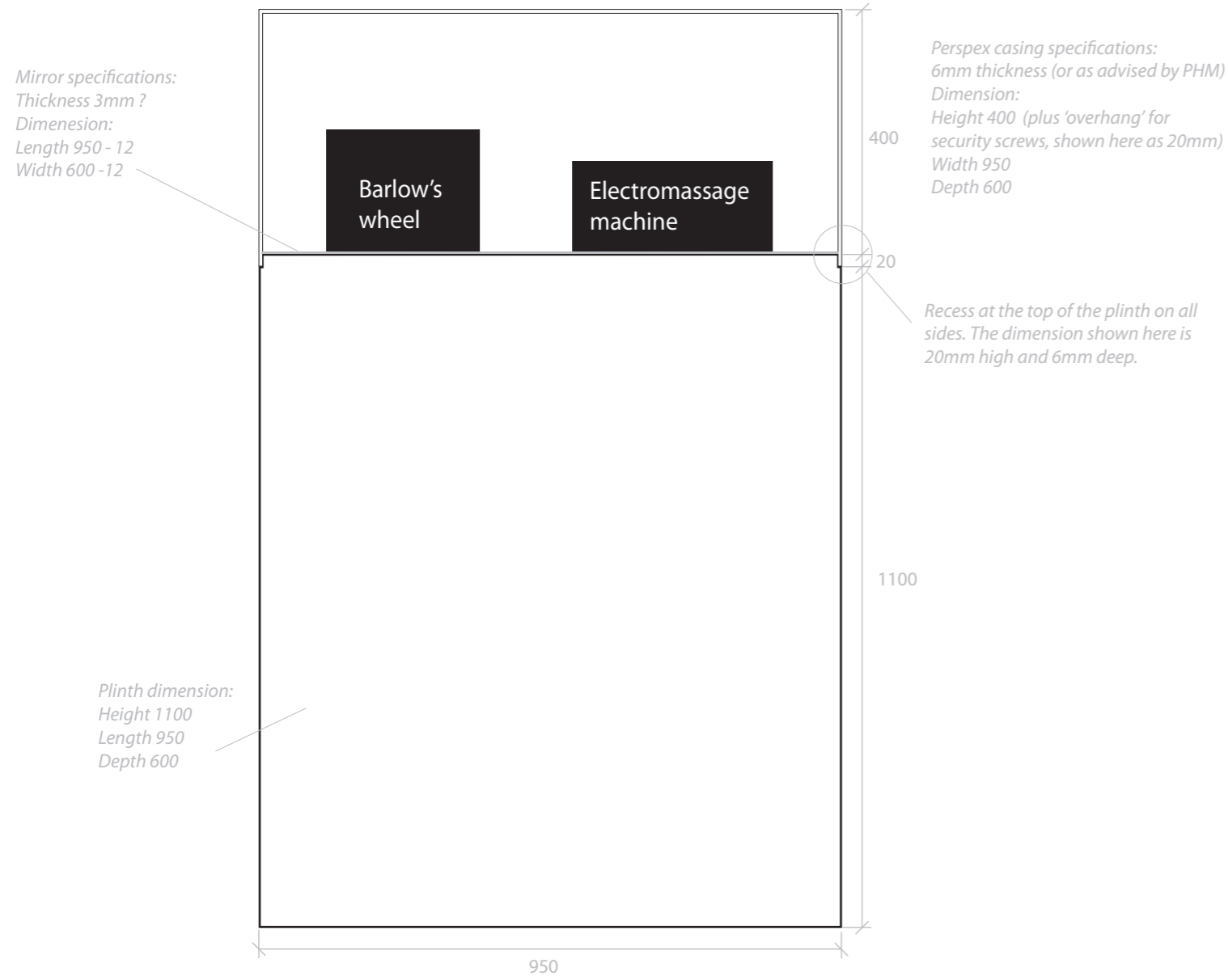
Plinth dimension:
Height 800
Length 1350
Depth 650



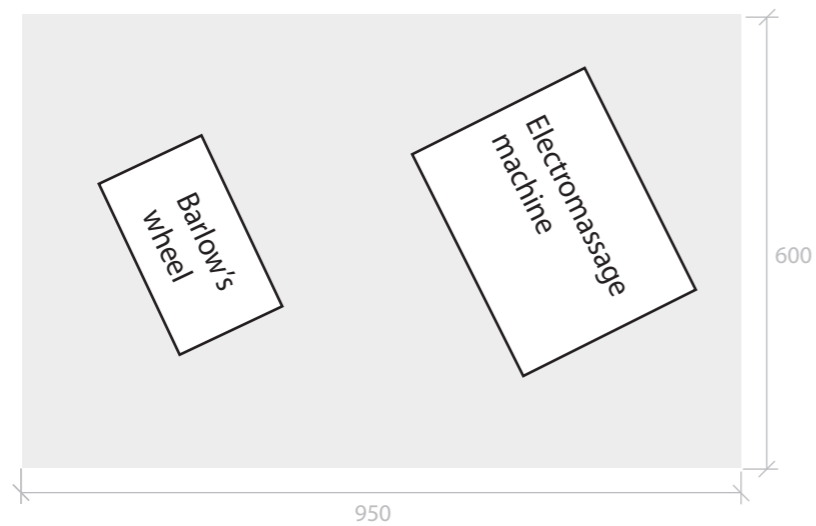
No. of security screws around the plinth as appropriate.

Objects Group 3
Scale 1: 10

Side View



Top view

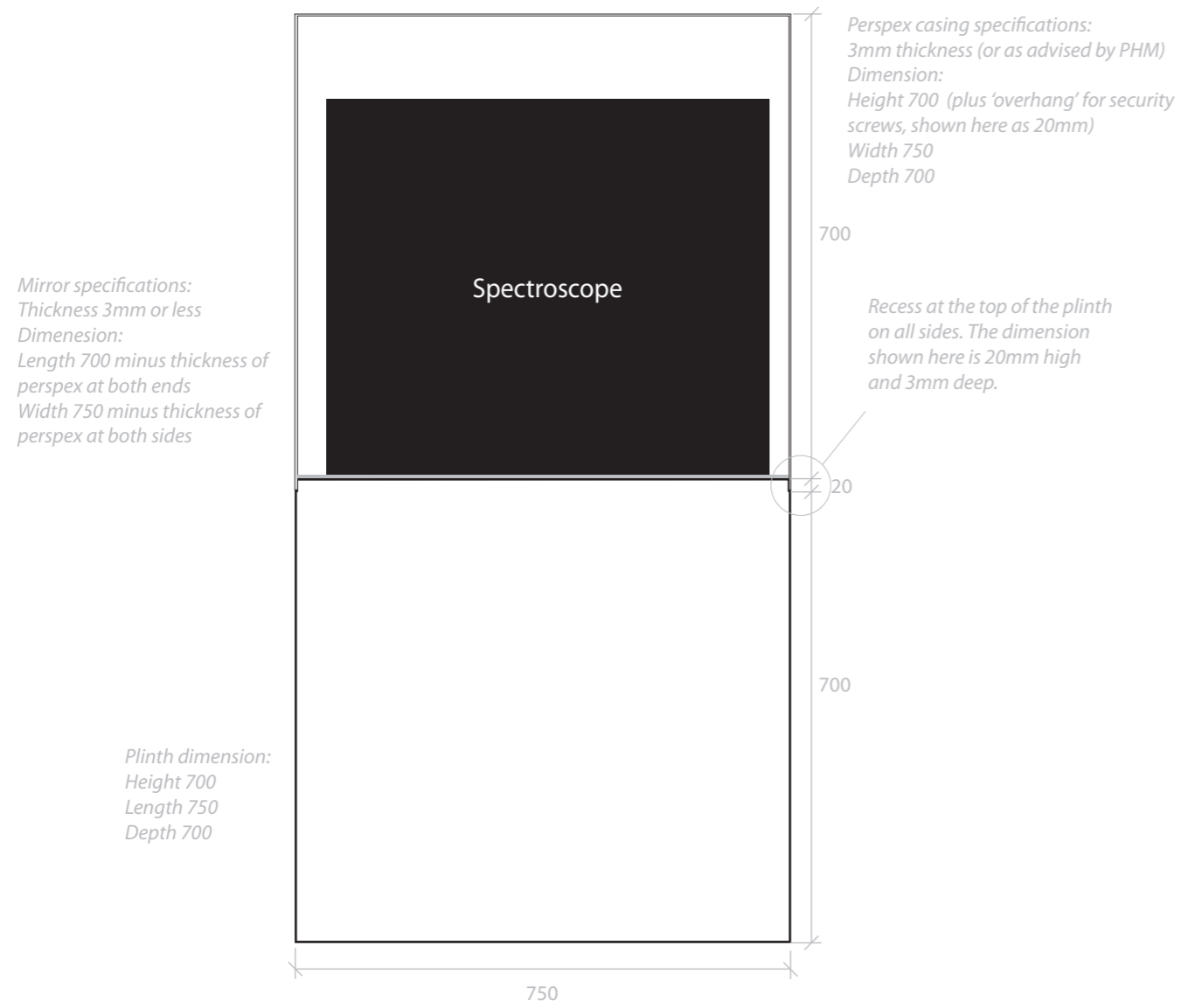


No. of security screws around the plinth as appropriate.



Objects Group 4
Scale 1:10

Side View



Top view

